

Thank you for purchasing our dome lamp assembly. This unit was designed to replace the dome lamp in a 1967-70 Mustang but will also fit in 1965-6 Mustangs. The lamp base can be mounted up inside the headliner, or below it. We added a nice chrome finish to the lamp base to compliment our chromed bezel. We have also included two bulbs, so you can chose between a high-wattage "brighter than stock" bulb to increase visibility inside the car at night, or a lower wattage bulb.

Note: The higher-wattage bulb may cause damage to the lamp if left on for extended periods of time. Scott Drake's warranty will not cover damage to the lamp caused by extended use of the higher-wattage light bulb.

TOOLS REQUIRED:

- Phillips Screwdriver
- Utility Knife
- Wire Crimper

INSTALLATION: 1965-66 MUSTANG

Step 1: Prep Roof Brace

The roof of the Mustang coupe has a cross brace that is tapped for mounting a dome lamp. This brace can be felt through the headliner. We designed our lamp base to mount to the 2 holes shown. (Figure 1) After locating the brace, carefully cut a small access hole in the head liner. Insert the red power wire and push it towards either side of the roof.

Step 2: Cut Headliner

Pull away the wind lace from the door opening. Cut a small hole in the headliner as close as possible to where the wind lace covers the headliner. Pull the red wire through and towards the front. The wind lace will conceal the wire after installation.

Step 3: Connect Power Wiring

Remove the sill plate and kick panel to expose the door light switch harness. Run the wire to the door light switch. Cut off the bullet connector and add the quick splice spade. (Figure 2) Secure the quick splice spade to the black wire (with blue stripe) from the door light switch, and plug in the spade.

Step 4: Mount & Secure Lamp and Wiring

Mount the dome lamp base to the roof brace. Use the short flat head screws in the holes that are diagonal from the bulb. (Figure 3) Secure the short black ground wire on the lamp base with one of the mounting screws. Secure the lens and bezel to the base. Confirm the dome lamp comes on when either door is opened.

Note: If you choose to mount the base up inside the head liner, carefully cut a larger opening in the material. We suggest that no material be left near the bulb. Work carefully to avoid tearing the material.



Part #: COAF-13A719-B

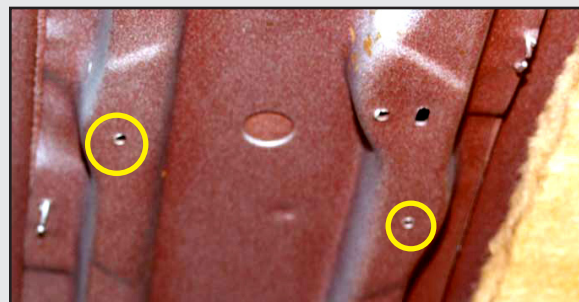


Figure 1: Two Mounting Point Locations

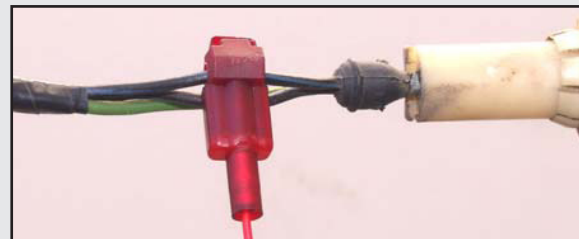


Figure 2: Quick Splice Spade

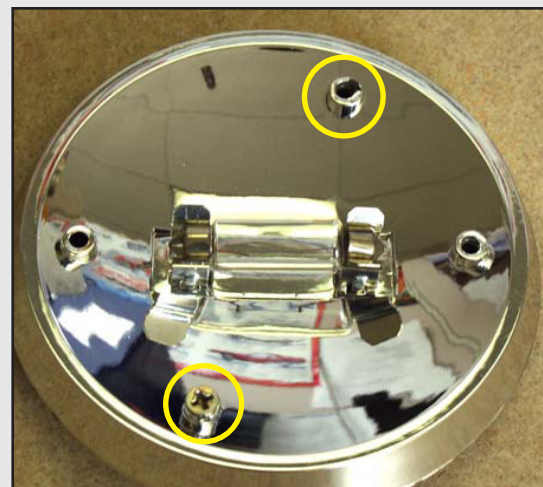


Figure 3: Two Mounting Point Locations

IS.13A719

INSTALLATION; 1967-70 MUSTANG COUPES

Step 1: Remove Hardware

If you are replacing your existing dome lamp, simply remove the old dome lens, bezel and lamp.

Step 2: Install & Connect Wiring

The original wire was run back to the passenger side quarter panel area. Remove the rear seat and quarter panel to locate the harness. You can connect the new lamp directly to the original harness GROUND in the roof (you may wish to shorten the new wire) or to the harness in the quarter area. Confirm that there is power at either point. You may also choose to route the wire to the front, as described in the 1965-6 installation, eliminating the need to remove the rear seat and quarter panel.

Step 3: Connect Power Wiring

Remove the sill plate and kick panel to expose the door light switch harness. Run the wire to the door light switch. Cut off the bullet connector and add the quick splice spade. Secure the quick splice spade to the black wire (with blue stripe) from the door light switch, and plug in the spade.

Step 4: Mount & Secure Lamp and Wiring

Secure the lamp base to the roof brace using the short, flat head screws. Secure the short black ground wire with one of the mounting screws. (Figure 4) Secure the lens and bezel to the base. Confirm the dome lamp comes on when either door is opened.

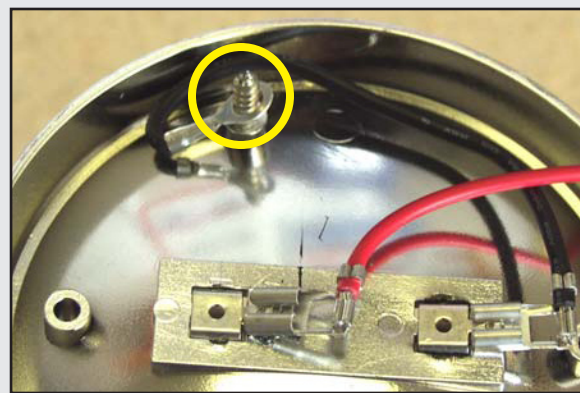


Figure 4: Grounding Point



Actual Finished Assembly

OTHER APPLICATIONS:

Our dome lamp assembly can be also installed in the trunk area and other areas throughout the car for improved lighting. When installing the lamp base in other areas DO NOT allow the connection with the red wire to contact any metal surface. Also note that the black, ground wire MUST contact a metal surface for proper ground.

SATISFACTION GUARANTEE:

If you are not happy with this product for any reason or found product to be defective in manufacturing, simply return it to Scott Drake Enterprises, Inc. within 30 days of purchase and we will replace it - no questions asked. We stand behind our products one hundred percent, so you can sit behind the wheel with pride.

** Please call Scott Drake Customer Service for a Return Authorization (RA) before returning any product. Proof of purchase and dated receipt must be present with any return. All returned products are tested and if found to be damaged by the installer, no replacement will be issued. You pay the cost to ship to us, we pay for the return shipping. Guarantee does not include any labor and/or tax charges incurred.*

To place an order, or for current pricing, call your authorized Scott Drake dealer.

For a list of dealers in your area, or for any other questions about Scott Drake products, visit www.scottdrake.com or call our customer service department toll free:

1.800.999.0289

Mon - Thurs 7:00 a.m. to 5:00 p.m.
Friday 7:00 a.m. to 4:30 p.m. - PST



130 Cassia Way
Henderson, NV 89014
t: 702.853.2060
f: 702.853.2062