

Thank you for choosing this quality Scott Drake product for your vehicle. Please read these instructions carefully. Make sure you have the correct parts and proper tools before attempting installation.

WARNING

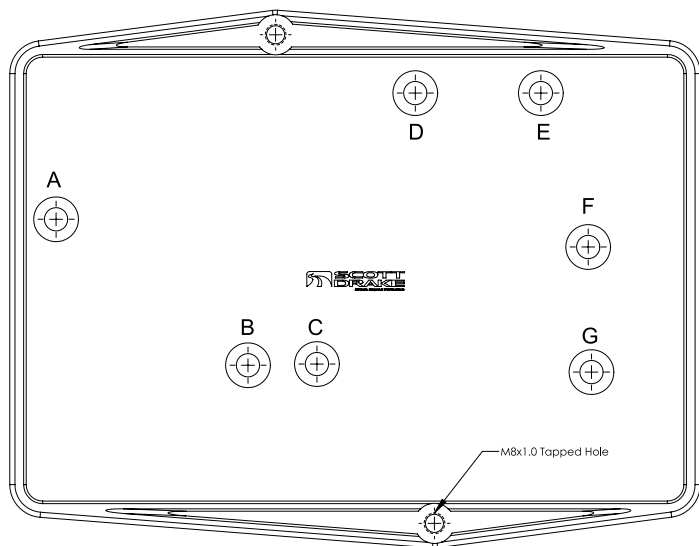
Always wear gloves and protective eye-wear when working on your vehicle. Disconnect the battery. Be sure to properly support the vehicle with jack stands and secure the wheels with chocks to prevent the vehicle from rolling. Do not rely on a floor jack. If any part of this installation seems beyond your level of experience, please seek the help of a professional installer.

TOOLS REQUIRED:

- 1/2" combination wrench
- 1/2" socket with ratchet
- 13mm combination wrench
- 5mm allen wrench
- 6mm allen wrench
- 12mm open end wrench

NOTE: This battery tray is engineered to work with most Group 24 sized batteries and similar sized gel cell batteries.

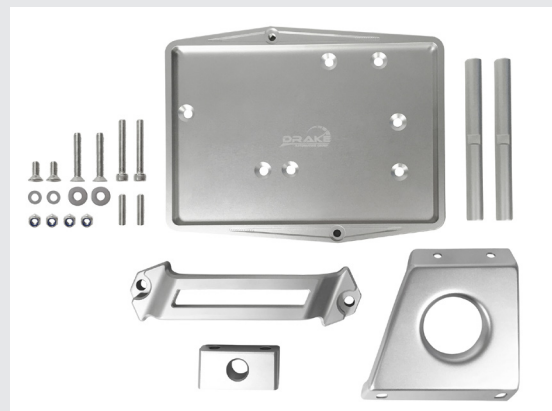
NOTE: Check to ensure top bracket will fit the battery you intend to use before installing. The top bracket will not work with some side terminal batteries that have top features providing a non-flat clamping surface.



Bolt hole diagram



C5ZZ-10732-AK



C7ZZ-10732-AK

C5ZZ-10732-AK INSTALLATION INSTRUCTIONS

KIT INCLUDES:

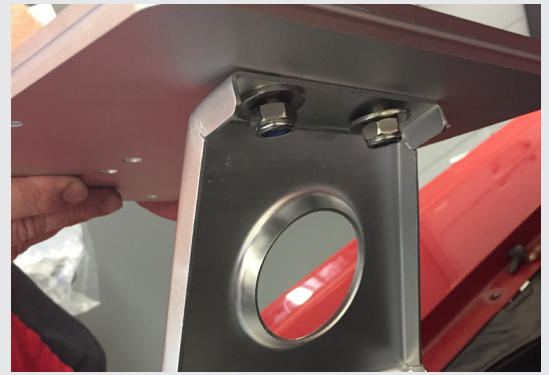
QTY	DESCRIPTION
1	Billet Battery Tray
1	Lower Support Bracket
2	Threaded Studs
2	Vertical Support Rods
1	Billet Battery Bracket
2	Small M8 Flat Washers
2	Large M8 Flat Washers
4	M8 Nyloc Nuts
4	M8x20 Flathead Tapered Bolts
2	M8x55 Allen Head Bolts

INSTALLATION INSTRUCTIONS:

1. Disconnect battery cables from battery.
2. Remove the original side mount bracket securing battery to factory tray and remove battery from vehicle.
3. Using ½" wrench and socket, remove hardware securing battery tray to vehicle. Two bolts on top and two bolts on side below top surface of the battery tray. Access to the back side of bolts is from underside of the car.

Two lower bolts and nuts removed from battery engine apron will be reused for installation.

4. Referring to the bolt hole diagram included, use holes F and G to install two M8 flat head tapered bolts and secure the lower support bracket to the bottom side of the battery tray as shown. (pic 1a) Use two M8 nyloc nuts and 2 smaller diameter M8 washers provided. Do not tighten at this time.
5. Position battery tray in vehicle in similar fashion original was removed. Reuse original hardware to loosely secure lower Drake bracket to inner battery apron. (pic 2a) Use a ½" combination wrench and ½" Ratchet/Socket for install. Do not tighten at this time.
6. Referring to bolt hole diagram included, use holes A and B and install two M8 flat head tapered bolts. At the bottom of the battery apron secure bolts with two M8 nyloc nuts and 2 larger diameter M8 washers provided. Battery tray will have some adjustment, position so tray is level and use a M5 Allen Wrench and 13mm combination wrench and tighten to 16 ft/lbs.
7. Make sure battery tray is level and tighten all remaining hardware. Torque M8 bolts supplied to 16 ft/lbs. Torque OE bolts reused to 13 ft./lbs.



pic 1a



pic 2a

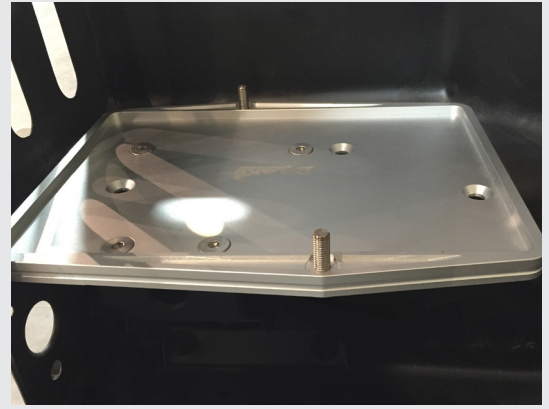


pic 1b

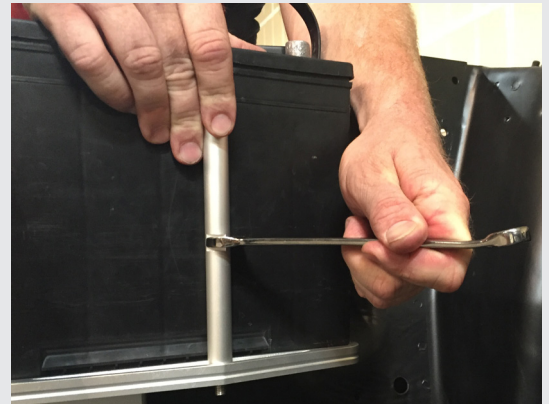


pic 2b

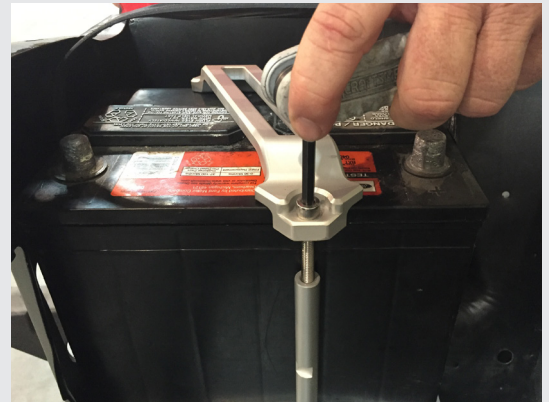
8. Install short threaded studs into battery tray base until they bottom out.(pic 3)
9. Install the support rod onto the stud closest to the front of the vehicle. Tighten snugly using a 12mm open ended wrench.
10. Position battery onto tray making sure it's seated fully in tray base.
11. Thread second vertical support rod onto remaining threaded stud and secure tightly with 12mm open ended wrench. (pic 4)
12. Position billet battery bracket provided over battery. Using a M6 Allen Wrench secure install M8x55 allen head bolts provided. Make sure not to over tighten and damage battery. (pic 5)
13. Reconnect the battery cables.



pic 3



pic 4



pic 5

C7ZZ-10732-AK INSTALLATION INSTRUCTIONS

KIT INCLUDES:

QTY	DESCRIPTION
1	Billet Battery Tray
1	Lower Support Bracket
1	Spacer Block
2	Threaded Studs
2	Vertical Support Rods
1	Billet Battery Bracket
2	Small M8 Flat Washers
2	Large M8 Flat Washers
4	M8 Nyloc Nuts
2	M8x55 Allen Head Bolts
2	M8x20 Flathead Tapered Bolts
2	M8X50 Flathead Tapered Bolts

INSTALLATION INSTRUCTIONS:

1. Disconnect battery cables from battery.
2. Remove the original top bracket securing battery to factory tray and remove battery from vehicle.
3. Using ½" wrench and socket, remove hardware securing battery tray to vehicle. Two bolts on top and two bolts on side below top surface of the battery tray. Access to the back side of bolts is from underside of the car.

Two lower bolts and nuts removed from battery engine apron will be reused for installation.

4. Referring to the bolt hole diagram included, use holes D and E to install two M8 flat head tapered bolts and secure the Spacer Block



and the lower support bracket to the bottom side of the battery tray as shown. (pic 1b) Use two M8 nyloc nuts and 2 smaller diameter M8 washers provided. Use a M5 Allen Wrench and 13mm combination wrench for install. Do not tighten at this time.

5. Position battery tray in vehicle in similar fashion original was removed. Reuse original hardware to loosely secure lower Drake bracket to battery apron. (pic 2b) Use a ½" combination wrench and ½" Ratchet/Socket for install. Do not tighten at this time.

6. Referring to bolt hole diagram included, use holes G and C and install two M8 flat head tapered bolts. On the lower section of battery apron secure bolts with two M8 nyloc nuts and 2 larger diameter M8 washers provided. Battery tray will have some adjustment, position so tray is level and use a M5 Allen Wrench and 13mm combination wrench and tighten to 16 ft/lbs.

7. Make sure battery tray is level and tighten all remaining hardware. Torque M8 bolts supplied to 16 ft/lbs. Torque OE bolts reused to 13 ft./lbs.

8. Install short threaded studs into battery tray base until they bottom out. (pic 3)

9. Install the support rod onto the stud closest to the outer fender of the vehicle. Tighten snugly using a 12mm open ended wrench.

10. Position battery onto tray making sure it's seated fully in tray base.

11. Thread second vertical support rod onto remaining threaded stud and secure tightly with 12mm open ended wrench. (pic 4)

12. Position billet battery bracket provided over battery. Using a M6 Allen Wrench secure install M8x55 allen head bolts provided. Make sure not to over tighten and damage battery. (pic 5)

13. Reconnect the battery cables.

SATISFACTION GUARANTEE:

If you are not happy with this product for any reason or found product to be defective in manufacturing, simply return it to Scott Drake within 30 days of purchase and we will replace it – no questions asked. We stand behind our products one hundred percent, so you can sit behind the wheel with pride.

** Please call Scott Drake Customer Service for a Return Authorization (RA) before returning any product. Proof of purchase and dated receipt must be present with any return. All returned products are tested and if found to be damaged by the installer, no replacement will be issued. You pay the cost to ship to us, we pay for the return shipping. Guarantee does not include any labor and/or tax charges incurred.*

Also available from Scott Drake



65-68 Radiator Recovery Tank



Legendary Magnum 500 and Legendary Styled Alloy Wheel

See more at scottdrake.com

To place an order, or for current pricing, call your authorized Scott Drake dealer.

For a list of dealers in your area, or for any other questions about Scott Drake products, visit www.scottdrake.com or call our customer service department toll free:

1.800.999.0289

Mon - Thurs 7:00 a.m. to 5:00 p.m.
Friday 7:00 a.m. to 4:30 p.m. - PST



130 Cassia Way
Henderson, NV 89014
t: 702.853.2060
f: 702.853.2062